

# Lasting Home Panel



We hope you will come to the panel yourself, but if you don't want to, or feel worried about this – that's your choice. your social worker will talk with you about whether you want to come in person, or write a letter, or poem or send a picture. It's your panel and we want you to do whatever you feel happy with.

After panel if all goes well there will be a celebration! The big bosses will ask you how you want to celebrate your lasting home and your social worker will have worked through some exciting ideas before the panel.

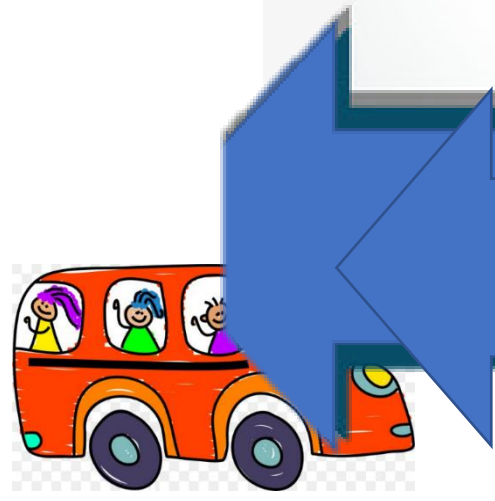
You will have your celebration and be given a certificate to celebrate your lasting home.

You and your carers are the most important people to come to the panel. You can bring others with you if you like. Your social worker can come, your IRO can come and any other people who you think should be there.

Your social worker will talk with you about the panel. A panel sounds scary, it's just a meeting. The big bosses will be there, and we would really like you to come and tell us why you think your foster home should become your lasting home.

If this meeting says we should go to lasting home panel, your social worker will book a panel slot for you.

Your matching meeting will take place to discuss whether your foster home should become your lasting home. Your views, your birth parents and carers views and the adults who you have told us are important are all key to this meeting.



Discussions between you, your social worker, and independent reviewing officer will start about whether to make your foster home your lasting home.

Your social worker will visit you and share this road map to help you understand the lasting home panel process

Your social worker will help you make sense of any worries you may have about what this means for your birth family or future care plan.

You will help your social worker understand who the most important people are in your life and these people will be invited to your 'matching meeting'. You don't have to attend this, but you can if you like